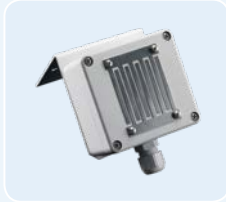




## Brakel® Accessories for control panels

### Rain detector RM/2 24 V



For connection to 24 VDC SHE and ventilation control panels and 230 VAC wind / rain detection panels. With built-in transmitter for rain detector. Outside temperature-dependent, heated sensor area. Forwarding the wind pulses via separate output possible.

Supply voltage	: 20 - 30 VDC or 20 - 28 VAC
Current consumption	: max. 110 mA Standby about 33 mA
Output potential-free changeover contact	: max. 30 V / 1 A
Connections	: max. 2.5 mm <sup>2</sup>
Delivery incl. mounting bracket	

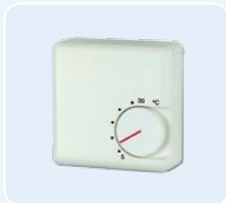
### Wind and rain detector WRM/2 24 V



For connection to 24 VDC SHE and ventilation control 230 VAC wind / rain control panels. With built-in transmitter for wind and rain detector. Outside temperature dependent heated sensor area. Wind pulse transmission via separate output possible.

Supply voltage	: 20 - 30 VDC or 20 - 28 VAC
Current consumption	: max. 110 mA Standby about 33 mA
Output potential-free changeover contact	: max. 30 V / 1 A
Connections	: max. 2.5 mm <sup>2</sup>
Ambient temperature range	: - 20 °C to + 60 °C
Delivery incl. mounting bracket	

### Temperature sensor TS-1030



For automatic ventilation control of the room temperature for use in dry environments. With set point adjustment + 5 °C to + 30 °C. For surface mounting (SM) and flush-mounting (FM).

Switching contact	: 1 changeover
Dimensions	: 70 x 70 x 26 mm (H x W x D)
Colour	: White
Supply cable required	: 2 x 2 x 0,8 mm <sup>2</sup> (at 24 VDC), 4 x 1,5 mm <sup>2</sup> incl. PE (at 230 VAC)

## SHE manual call point RBH / 3 A



Manual call point for manual trigger of a SHE notification

- ABS-housing in flat design in accordance with DIN 14655, for internal mounting.
  - Available as RBH / 3 A / SU / ALU also in aluminium housing.
  - With concealed locking button "SHE Closed".
  - Incl. Key and Service sign "Out of service".
- RBH / 3 A / SU and RBH / 3 A / SU / ALU also available with buzzer.
  - With function keys "SHE Open" and "SHE Closed".
  - With LED display "SHE OPEN", "Operation", "Fault".
  - Certified in accordance with the prEN 12101-9:2004.

Operating voltage	: 24 VDC (+ 15% / + 25%)
Supply cable required	: 4 x 2 x 0,8 mm <sup>2</sup>
Dimensions (H x W x D)	: 125 x 125 x 36 mm
Ambient temperature	: - 5 °C to + 40 °C
Degree of protection	: IP 40 in accordance with DIN EN 60529
Housing material	: ABS plastic or aluminium
Colour	: Orange

## Optical smoke detector MSD 523/MS



VdS certificated optical smoke detector including socket.

The maximum area monitored and installation height of the monitored space depends on the roof pitch and the horizontal distance between the detectors in accordance with DIN EN 54-7 for smoke detectors.

Operating voltage	: 18 VDC to 30 VDC
Reporting criteria	: Current increase, 2-wire technology
Monitoring area	: Max. 120 m <sup>2</sup>
Installation height	: Max. 16 m
Permitted air speed	: Max. 20 m / s
Current consumption	: Quiescence max. 120 uA during alarm min. 19 mA, max. 22.5 mA
Ambient temperature	: - 25 °C to + 60 °C
VdS approval	: G 207123

## Ventilation switch LTA 25 for 24 V systems



For manual ventilation function via the switches Open / Stop / Close with built-in LED indicator "Open". For surface mounting (SM) and flush-mounting (FM).

Supply cable required	: 2 x 2 x 0,8 mm <sup>2</sup>
Dimensions (H x W x D)	: SM: 81 x 81 x 51 mm FM: 81 x 81 x 7 mm
Colour	: Pure white

## Ventilation key switches LTA 12 for 24 V or 230 V systems



For manual ventilation OPEN and CLOSE using a key. For use of a semi-cylinder in accordance with DIN 18 252 (Semi-cylinder SZ10 ordered separately). Available as surface mounting (SM) and flush mounting (FM) versions

Supply cable required	: 2 x 2 x 0,8 mm <sup>2</sup> (at 24 V), 4 x 1,5 mm <sup>2</sup> incl. PE (at 230 V)
Contacts	: 2 x over the middle position
Operating voltage	: 24 VDC or 230 VAC
Dimensions	: 81 x 81 mm
Colour	: Pure white

